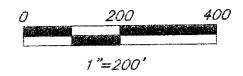


# SECTION 15, NORTHEAST QUARTER

BEING A PORTION OF THE NORTHEAST QUARTER OF SECTION 15, TOWNSHIP 43 SOUTH, RANGE 41 EAST OF THE VILLAGE OF ROYAL PALM BEACH, PALM BEACH COUNTY, FLORIDA

SHEET 2 OF 2



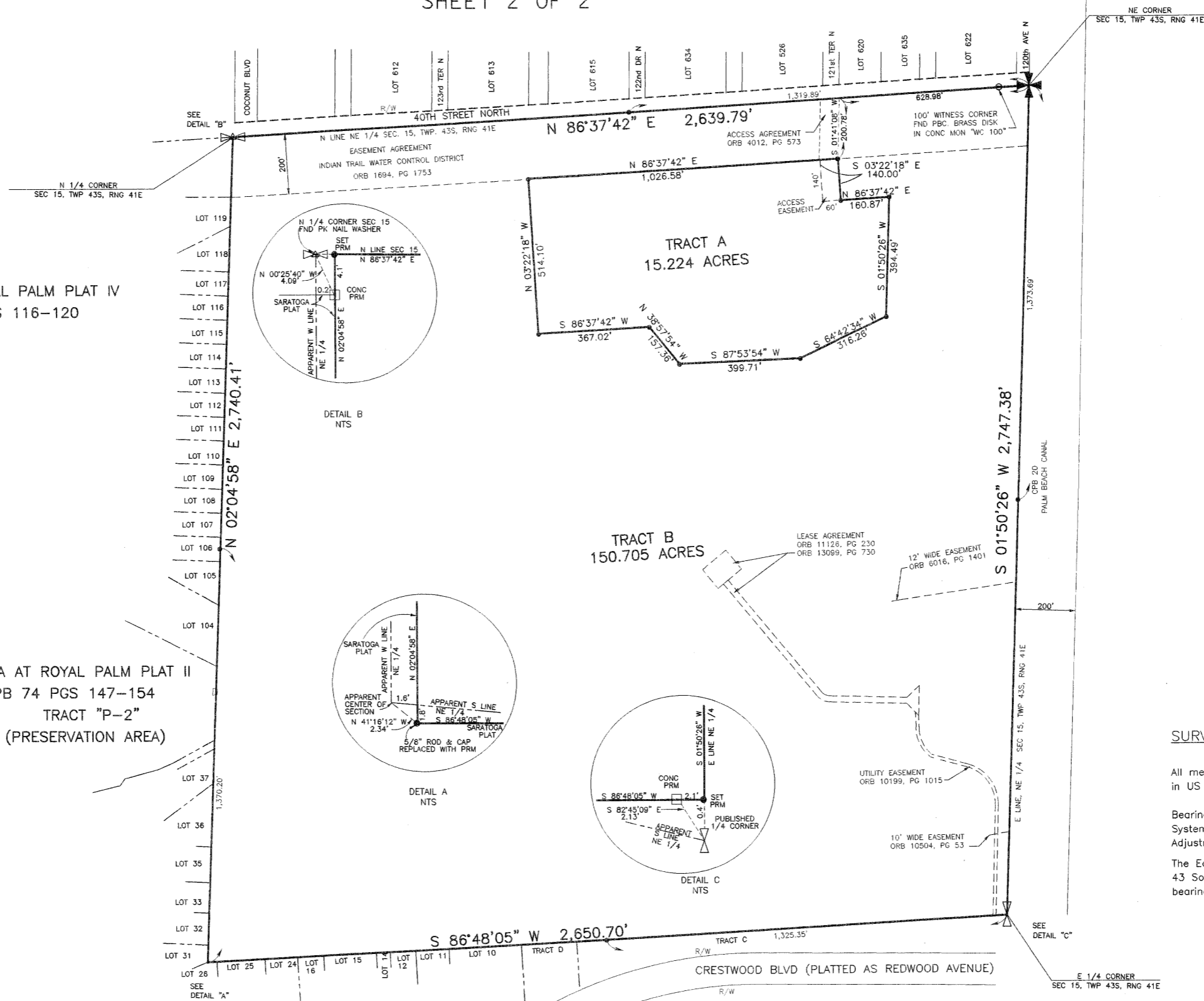
SARATOGA AT ROYAL PALM PLAT IV  
PB 79 PGS 116-120

SARATOGA AT ROYAL PALM PLAT II  
PB 74 PGS 147-154  
TRACT "P-2"  
(PRESERVATION AREA)

SARATOGA AT ROYAL PALM PLAT 1  
PB 61, PGS 66-74

### LEGEND

- ☉ = CENTERLINE
- ORB = OFFICIAL RECORD BOOK
- POB = POINT OF BEGINNING
- POC = POINT OF COMMENCEMENT
- RNG = RANGE
- R/W = RIGHT OF WAY
- TWP = TOWNSHIP
- △ = FOUND PK NAIL AND WASHER
- NTS = NOT TO SCALE
- P = PLATTED
- = FOUND SRD CONCRETE MONUMENT
- = SET 18", #5 REBAR WITH YELLOW CAP  
STAMPED ERDMAN ANTHONY LB 6595 PRM
- ⊙ = FOUND BRASS SURVEY DISK
- SQ = SQUARE
- FND = FOUND
- CONC = CONCRETE
- MON = MONUMENT
- ✦ = SECTION CORNER
- ⊞ = QUARTER CORNER
- US = UNITED STATES
- N/F = NOW OR FORMERLY
- = 5/8" IRON ROD & CAP
- PG = PAGE
- PRM = PERMANANT REFERENCE MARKER
- SEC = SECTION
- CPB = CANAL PLAT BOOK



### SURVEYORS NOTES/ REPORT

All measurements are in accordance with the United States Standard in US Survey feet and are ground distances unless otherwise noted.

Bearings and coordinates are based on the State Plane Coordinate System, Florida East Zone, North American Datum (NAD) 83/90 Adjustment.

The Easterly line of the Northeast quarter of Section 15, Township 43 South, Range 41 East bears North 01°53'05" West and all other bearings are relative thereto.

**ERDMAN ANTHONY**

1402 ROYAL PALM BEACH BLVD., BLDG 500  
ROYAL PALM BEACH, FLORIDA 33411  
PH 561-753-9723 FAX 561-753-9724 EB-25912 LB-7334